

KEF®

home theatre



KEF®

www.kef.com

KEF Audio (UK), Eccleston Road, Tovil, Maidstone, Kent, ME15 6QP U.K. Telephone: + 44 (0)1622 672261 Fax: + 44 (0)1622 750653
 KEF America Inc, 10 Timber Lane, Marlboro, New Jersey 07746 U.S.A. Telephone: +(1) 732 683 2356 Fax: +(1) 732 683 2358
 GP Acoustics GmbH, Heinrichstraße 51, D-44536 Lünen, Deutschland. Telephone: +49 (0) 231 9860-320. Fax: +49 (0) 231 9860-330
 GP Acoustics (France) SAS, 39 Rue des Granges Galand - BP414, 37554 Saint Avertin CEDEX, France. Tel : +33(0)2 47 80 49 01 Fax : +33(0)2 47 27 89 64

KEF Uni-Q, and Selectamount are registered trademarks. Uni-Q is protected under GB patent 2 236929, U.S. Pat. No. 5,548,657 and other worldwide patents.
 KEF reserve the right, in line with continuing research and development, to amend or change specifications.
 Dolby, Pro Logic, and the double-D symbol are registered trademarks of Dolby Laboratories. DTS is a registered trademark of Digital Theatre Systems Inc.
 NXT is a trademark of New Transducers Limited.

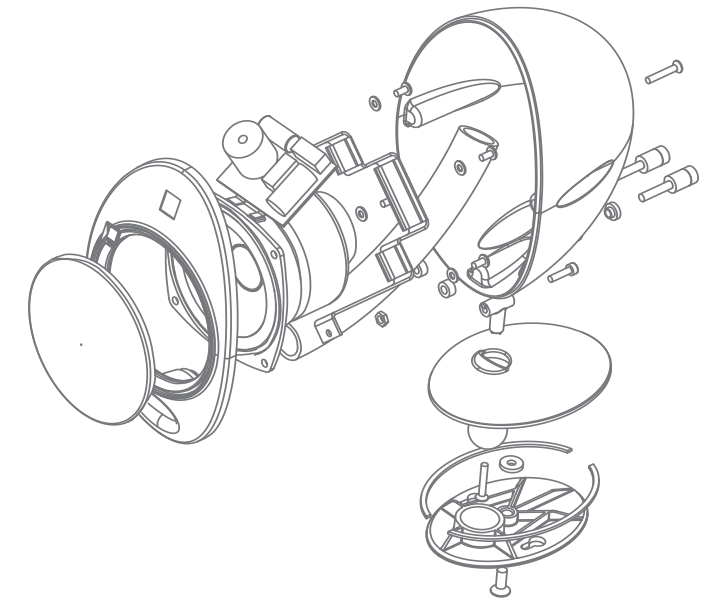
perfect sound wherever you are

www.kef.com

Content

KEF and the KHT story	02
Uni-Q® Technology	03
ACE Technology	04
KHT1000 Series	05
KHT2000 Series	07
KHT3000 Series	09
HTB2 Subwoofer	11
KHT5000 Series	13
KHT6000 ACE	15
KHT9000 ACE	17
<i>fi</i> vetwo Series	19
Specifications	23

KEF and the KHT story



The more sophisticated that digital audio formats become, the better your speakers need to be. Which to choose, though? Manufacturers come and go. Design trends appear, then fade away. But with KEF, you're dealing with people who've been consistently innovating since 1961.

The KEF Home Theatre (KHT) series is a good example. By bringing audiophile quality sound to affordable home entertainment, it's been breaking new ground ever since it was first introduced. As its many awards and 5-star ratings prove, the original outperformed every conventional system in its class.

But the latest KHT systems extend this advantage even further, whatever your budget. With the introduction of radically innovative concepts like Acoustic Compliance Enhancement (ACE), the latest refinements of KEF's trademark Uni-Q technology and a new generation of powered subwoofers, there's a formidable line-up of options to choose from.

They're all designed to reproduce every last detail encoded in the latest home entertainment formats, and having identical drivers for the satellite and centre speakers of each system guarantees a perfect tonal match. Naturally, they're all magnetically shielded to avoid interference with your other equipment.

And although each has its own distinctive look, every system is engineered with acoustically inert cast aluminium enclosures and high end components including new metal dome tweeters to create an accurate and compellingly real 3D soundscape - and with the ultra-wide dispersion characteristics of KEF's Uni-Q point source array, it's enjoyed with equal pleasure by everyone in the room.

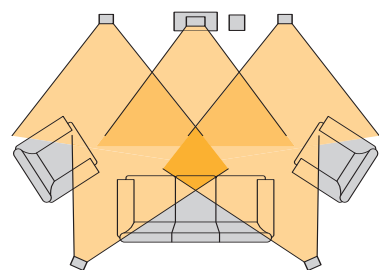


Technology



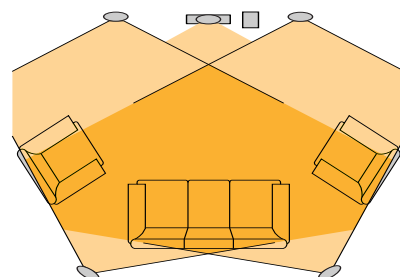
Uni-Q

KEF's patented Uni-Q driver configuration disperses the sound image over a much larger area than a conventional speaker, instead of being restricted to a small 'sweet spot'. This outstanding off-axis response is made possible by using aerospace materials to engineer a high performance tweeter that's small enough to mount in the exact acoustic centre of the bass/midrange cone so that both act as a single point source - an ideal that, so far, only KEF has achieved.



Conventional loudspeaker dispersion showing narrow 'sweet spot'

Based on those developed for the legendary Reference series, the Uni-Q arrays in the new KHT range are the most sophisticated yet, with new metal dome HF drivers that reproduce the human voice with breathtaking accuracy. In purely practical terms, the larger sound image gives you far greater flexibility in placing your speakers where they look best. For home theatre, it means that you experience even the subtlest 3D soundtrack effects with the same clarity and realism wherever you sit.



Excellent dispersion characteristics common with all Uni-Q based products showing wider listening area

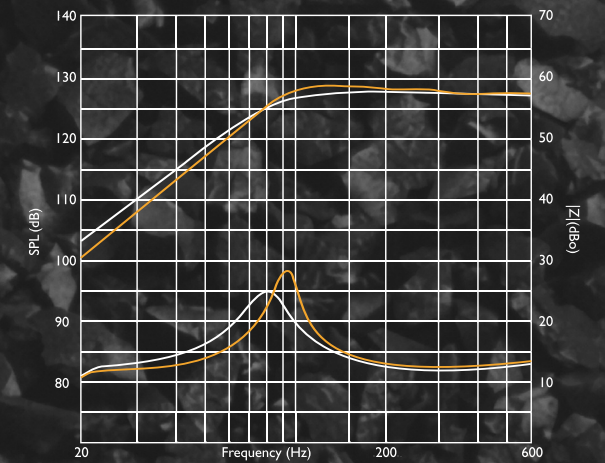
ACE

The holy grail of loudspeaker design has always been to generate big bass from small boxes. The trouble is, the laws of physics make this almost impossible to achieve, as bass extension relates directly to efficiency and cabinet size.

Continuing a 40-year tradition of genuine design innovation, KEF engineers have now developed a way of overcoming this apparently insoluble limitation. It's called Acoustic Compliance Enhancement (ACE), and it works like this. In conventional speakers, cone motion is restricted by the acoustic pressure in the enclosure as the air is alternately compressed and expanded by the cone moving in and out. The smaller the enclosure, the greater the pressure that acts on the cone. By dramatically reducing this pressure, ACE allows the cone to move as freely as it would in a much larger cabinet, generating bass extension out of all proportion to its actual size.

This is achieved by introducing granules of activated carbon into the enclosure - a material containing millions of pores ranging in size from visible fissures to holes a few molecules across. One of its characteristics is a capacity for physical

Effect of ACE on a 10 litre closed box loudspeaker



adsorption, the gravity-like molecular force in which a substance (usually a gas) accumulates in a thin film on the surface of a solid. In the ACE loudspeaker when the cone moves inwards the air pressure increases, triggering adsorption of air molecules from the free air into the carbon. This removal of air molecules from the free air causes the internal pressure to decrease. When the cone moves outwards the opposite happens and the carbon gives out air molecules. The ACE material is constantly acting to reduce the pressure variations in the enclosure in a controlled and linear fashion.

It's an innovation that makes an amazing difference for the listener. By enhancing compliance by anything from 150% to 300%, ACE-enabled loudspeakers perform like units up to three times their size. In trials of identical Uni-Q arrays fitted to an ACE enclosure 40% smaller than the test cabinet, not only did the listeners agree that bass was undiminished - they unanimously preferred the bass attack of the ACE version. And that's the acid test of any radical breakthrough in audio design: subjectively as well as objectively, ACE enriches the listening experience.



home theatre 1000 Series



Discreet design of HTS1001 satellite

Smallest ever Uni-Q array 75mm (3in.) with 15mm (0.6in.) aluminium dome tweeter (top) Cast aluminium enclosure (bottom)

Optional floor stands

KHT1005



They may look cute - but they sound anything but. Experiencing a movie or favourite album through KHT1005 is like seeing an old friend after a makeover: fresh, involving, more intense. The centre and satellite speakers all have KEF's stunning new 75mm (3in.) Uni-Q driver - the smallest ever made, its 15mm (0.6in.) metal dome tweeter and double neodymium magnets delivering the extended bandwidth you normally get with much larger units.

The curvy die-cast aluminium enclosures eliminate the diffractions and internal resonances that so often blur the output of conventional small speakers, so the sound is cleaner and crisper.

The sound image is completed by the slot-ported PSW1000.2 subwoofer*, its 100-Watt onboard power amp driving a 200mm (8in.) long-throw down-firing bass unit. With output fully adjustable for phase, frequency and level, a ground lift to prevent hum and a cinema setting for even weightier bass punch, its attack is as forceful as it is accurate.

Whether you prefer shelf mounting, optional wall brackets or floor stands with internal cable management, the installation is as discreet as can be - until you press 'play', and the whole room fills with immaculate three-dimensional sound. Matt silver finish.

* Note: Subwoofer may differ slightly in North America.



home theatre 2000 Series



PSW2010 active subwoofer

Cable management system built into mounting bracket (top) Soft black finish (bottom) of HTS2001.2 satellite

10mm (4in.) Uni-Q driver with twin neodymium magnet system and 19mm (0.75in.) aluminium dome tweeter (top) Adjustable stand of a matt silver centre speaker (bottom)

KHT2005.2



Charismatic is the only word to describe it. Like the multi-award-winning KHT2005 from which it evolved, the reflex-ported KHT2005.2 pushes the performance envelope of midrange home theatre like no other system.

The spec tells part of the story: with parabolic enclosures computer optimised to eliminate cabinet distortions, the full range centre and satellites all feature KEF's new 100mm (4in.) Uni-Q array incorporating the 19mm (0.75in.) aluminium dome tweeter from the acclaimed Q series. Ferrofluid-cooled for better power handling and driven by twin neodymium magnets, HF reproduction is startling - even whispered dialogue is pin-sharp.

But the real magic lies in the way all the system components work together.

The tonal match is perfect, and transitions are so smooth you simply can't hear them. Like all KHT series subwoofers, the matching 250-Watt PSW2010 has a cinema setting for even more bass 'slam' with movie sound effects, and individual phase, frequency and level controls allow you to fine tune the output to get the perfect balance with the satellite speakers and your room acoustics.

An ingenious multi-directional base makes it easy to place each satellite wherever it suits you: on a flat surface, at an angle on walls, or on the optional floor stands. It all adds up to a chic, superbly engineered system that delivers way beyond what you'd expect for the price. Available in matt silver finish or soft black.



home theatre 3000 Series



HTS3001 satellite
- high gloss black finish

HTC3001 centre speaker (top)
High quality magnetic grilles used for
centre and satellites are interference-
free from TV and other nearby
electronic equipment (bottom)

The elegantly simple optional matt finished
floorstands complement the satellite
speakers in both form and function

KHT3005



Clearly an evolution - in styling terms - of the signature egg shape, the 3000 series is a completely new design that looks better and sounds sweeter than anything else in its class.

The new 115mm (4.5in.) Uni-Q driver of the satellite and centre speaker has been comprehensively engineered for even cleaner, smoother response. Distinctive radial ribs on the midrange cone improve its rigidity for pure, clean vocal effects with exceptionally low distortion. The cast aluminium enclosures are shaped to minimise internal resonance so that the satellites fill the room with a lush and incredibly detailed 3D sound.

KEF's unique new Sealed Suspension Technology - SST™ (patent applied for) dramatically improves sound quality at higher volumes as it effectively seals the gap between the moving mid-range cone and tweeter.

Carrying up to 60% of the sound, the centre channel is vital in any home theatre system, and the new dedicated HTC3001 centre speaker is in a class of its own.

Flanked by two 75mm (3in.) bass drivers in addition to the same Uni-Q drivers as the satellites, the hefty frontal impact is complemented by amazingly clear dialogue.

When you're buying audiophile quality sound, you want your system to look the part. The 3000 series comes in a choice of high gloss black or high gloss silver finishes; whichever you choose, you'll find that the surface reflections echo the distinctively smooth contours of the enclosures.



HTB2 Subwoofer



It's the first subwoofer at this price level that you won't want to hide away out of sight.

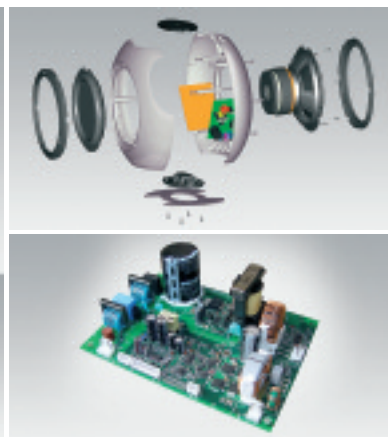
With an ultra-reliable, high efficiency, 250W class D amplifier powering a 250mm (10in.) driver with a matching auxiliary bass radiator, the radical HTB2 model subwoofer anchors the 3D sound image with stunningly realistic low frequency reproduction, and is designed to compliment the KHT and *fiveTwo* series home theatre systems.

Whether you prefer to position it vertically or horizontally, the story's the same: an acoustically inert enclosure shaped to eliminate internal standing waves, extremely fast response and SmartBass™ 'connect and go' versatility with simple bass boost and phase controls.

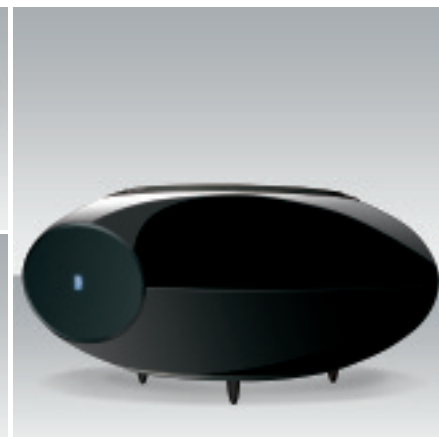
Available in high gloss black or high gloss silver.



Vertical orientation



250W class D amplifier



Horizontal orientation



KHT5005.2



home theatre 5000 Series

The cool minimalism of these slender cast aluminium column speakers belies the sophistication of the technology that makes them sound so authoritative.

Flanked by a pair of 75mm (3in.) long-throw bass drivers with ultra-low distortion motor systems, the Uni-Q array has KEF's 15mm (0.6in.) metal dome HF driver at the acoustic centre of the 75mm (3in.) midrange cone to disperse a seamless sonic image evenly throughout the listening area.

And what an image it is - richly textured and spatially precise in every dimension. Whether you're watching a film or chilling out to a few tracks, they sound as clean as they look. KEF's characteristic attention to detail in everything from the audiophile grade wiring and internal components to the curvature of the cabinets maximises the Uni-Q performance advantage, creating a big, expansive sound that's accurate enough to clarify every nuance in the recording.

The sensational new HTB2 Subwoofer pumps out a genius 250-Watts of distortion-free bass and with the choice of floor stands, wall brackets and either short or infinitely adjustable height desk stands, you can place the satellite speakers wherever they look best. Available in matt silver or high gloss black finishes.



Three way, closed box design 75mm (3") Uni-Q driver and bass units
Die-cast aluminium enclosure of the HTS5001.2 satellite

Optional floor (matt silver) and desk stands (high gloss black)

Wall or table top mounting options



home theatre 6000 Series



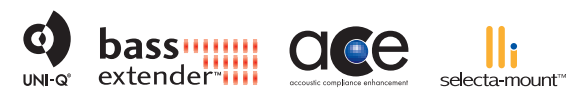
Uni-Q and bass drivers of the HTS6001 satellite (high gloss black)

ACE technology for improved bass (top) Integral terminal support for HTC6001 (bottom)

Integral terminal desktop stand for HTS6001 (high gloss black shown)

Optional 'Bass Extender™' bass enhancing stand for HTS6001 (matt silver shown)

KHT6000 ACE



Every once in a while you come across a piece of design that looks so right you just know it's going to perform superbly. Like the KHT6000 ACE. Designed from the start to complement the latest generation of flat screen TVs, it combines high-end KEF Audio technologies in a consummately elegant new package. Centre stage is a Uni-Q array with KEF's latest aluminium dome tweeter set into a 75mm (3in.) midrange cone, so you know that vocals are going to sound clear, warm and beautifully balanced wherever you sit.

With a line-up of no less than four 75mm (3in.) long-throw midrange/bass drivers with ultra-low distortion motors, you know that the sound image will be so real you can almost touch it. Big. Confident. Evenly voiced. The separate Uni-Q enclosure utilises ACE technology to move the enclosure resonance below the working frequency range and absorb higher frequency acoustic modes.

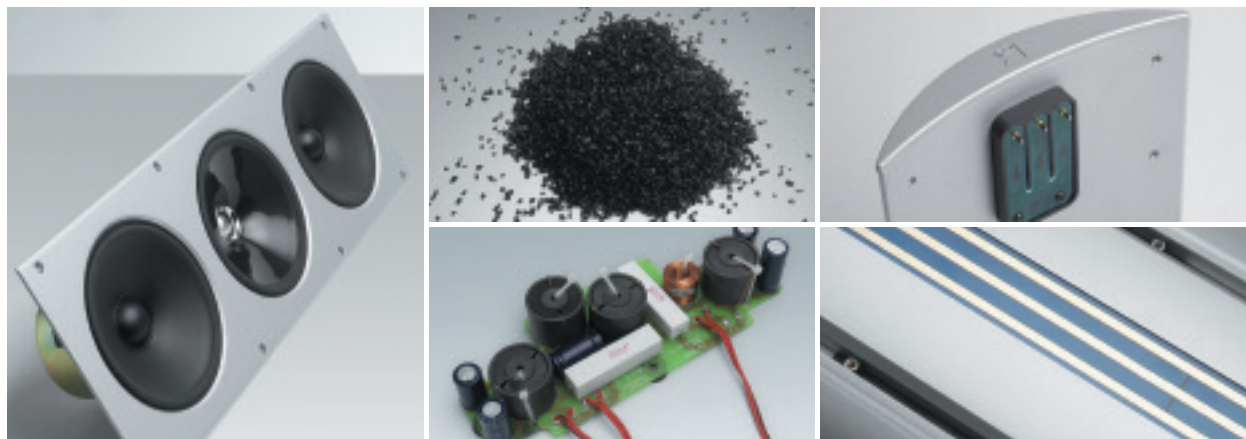
Not that you actually notice it after the first few minutes, of course - you just find that you start enjoying music and movies more than you used to.

What you might not expect is the ease with which they can be positioned in the room and around your screen. Because at the back of those slender elliptical-section anodised aluminium enclosures you'll find the ingenious new Selecta-mount™ system of concealed wall brackets; or if you prefer, there's always the neatly cable-managed standard shelf or desktop stand and the option of 'Bass Extender', a reflex ported floor stand to further enhance the bass output. Whichever you choose, you'll have the satisfaction of knowing that you have a speaker system that brings out the best in whatever you play.

Available in matt silver or high gloss black finishes.



home theatre 9000 Series



Aluminium baffle 165mm (6.5in.)
Uni-Q driver from XQ series
2 x 165mm (6.5in.) woofers

ACE technology for improved bass
(top) Crossover (bottom)

Innovative short/tall sliding stands
Wall/Free-space balance options

KHT9000 ACE



As the flagship system of the KHT family, KHT9000 ACE combines KEF's latest performance enhancing innovation with an uncompromised technical specification to create a true audiophile quality 3D sound picture: incredibly spacious, intricately detailed and totally engrossing.

The 165mm (6.5in.) Uni-Q driver array brings out the full emotional depth and texture of vocals, whether sung, shouted, spoken or whispered - hardly surprising, since it's the same unit as you'll find on the high end Q and XQ series.

On either side, a matching pair of long-throw bass drivers with ultra-low distortion motors for low frequency response that's as lucid as it is gutsy - and thanks to KEF's Acoustic Compliance Enhancement (ACE), what you actually hear is the level of bass extension that's only normally obtainable with much larger speakers.

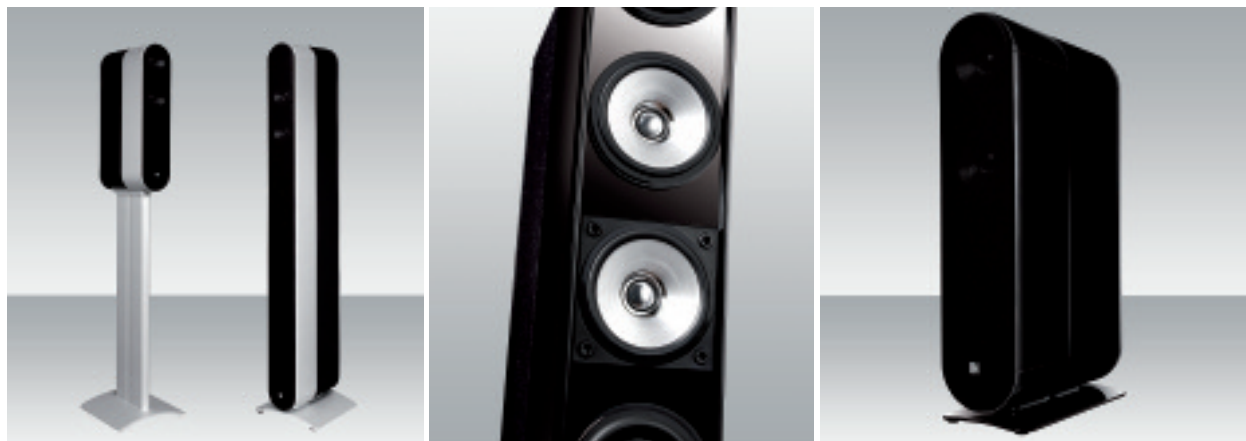
To achieve a genuinely integrated look that complements modern interiors, you have the option of wall brackets or infinitely adjustable desk or floor stands with stand-mounted terminals connecting to the drivers via an ingenious sliding track system. Depending on the mounting system chosen, stand or wall bracket, the connections automatically select either the free space or wall mount response setting. The wall filter has a unique form which corrects for both the fundamental wall reflection below 200Hz and the second mode at 700Hz allowing unprecedented tonal accuracy for a wall mounted speaker.

Available separately, and with a choice of compatible powered subwoofers, you're free to tailor yourself the set-up that best suits your tastes. If you take your entertainment seriously, it's a blue chip investment in pure pleasure.

Available in matt silver or high gloss black finishes.



home theatre *five two* series



Model 7 (on floor stand) and Model 11 in matt silver

75mm (3in.) Uni-Q driver with 15mm (0.6in.) tweeter

Model 7 satellite showing integral desk stand in high gloss black

five two series



Sound reproduction should be invisible - you want surround sound, with the hardware as unobtrusive as possible. Trouble is, conventional home theatre systems require at least five speakers and a subwoofer to be placed around the room, regardless of how they fit with the rest of your furniture.

Cables have to be run to the rears. Before you know it, your living space looks like a hi-fi showroom. That's why we came up with an alternative. As its name implies, the new *five two* series envelops you in the surround sound of a full 5.1 set-up using only two speakers and a subwoofer.



The hide-away subwoofer that best matches the *five two* series is KEF's powerful HTB2. Whether you choose the compact model 7 (with seven drivers in each speaker) or the formidable model 11 (with no less than eleven), the effect is amazing. Voices sound real and precisely located. Ambient effects travel through a realistic three-dimensional soundscape as the director intended. On screen action comes alive for everyone in the room, wherever they sit.

Available in sleek matt silver or high gloss black, they can be mounted either on neat adjustable wall brackets or floor stands - and in line with the thinking behind the whole concept, they're exceptionally simple to set up. All you have to do is connect the cables supplied to your 5.1 home theatre receiver/amp.



five **t w o** series
surround sound effect



Uni-Q and NXT Technology

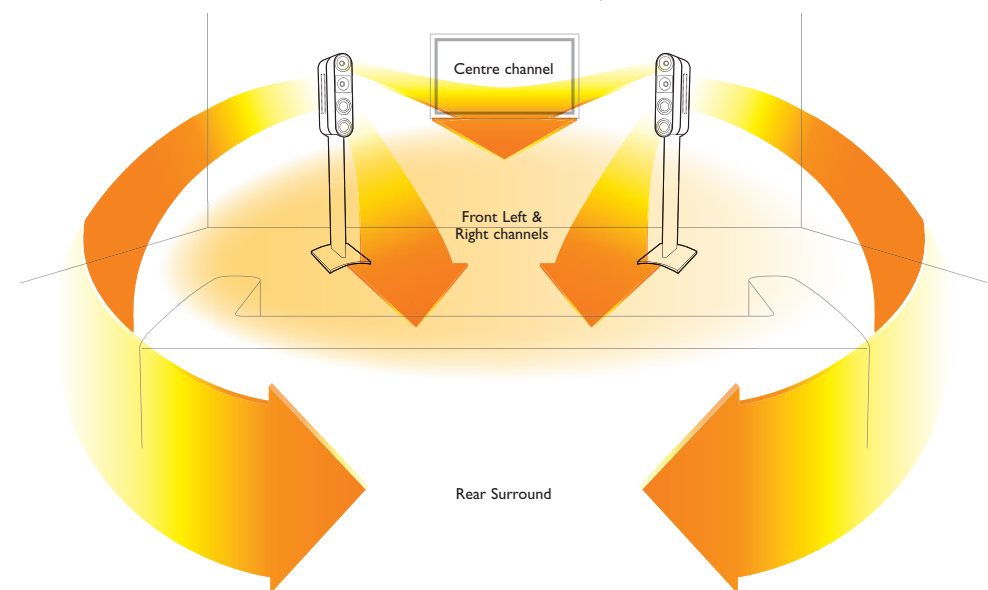
The secret lies in combining KEF's acclaimed Uni-Q "sit anywhere" driver concept with flat panel technology. Each speaker has a front-firing array of Uni-Q drivers from the award-winning 5000 and 6000 series, providing true dedicated centre speakers as well as spreading a highly detailed sound image to your left and right.

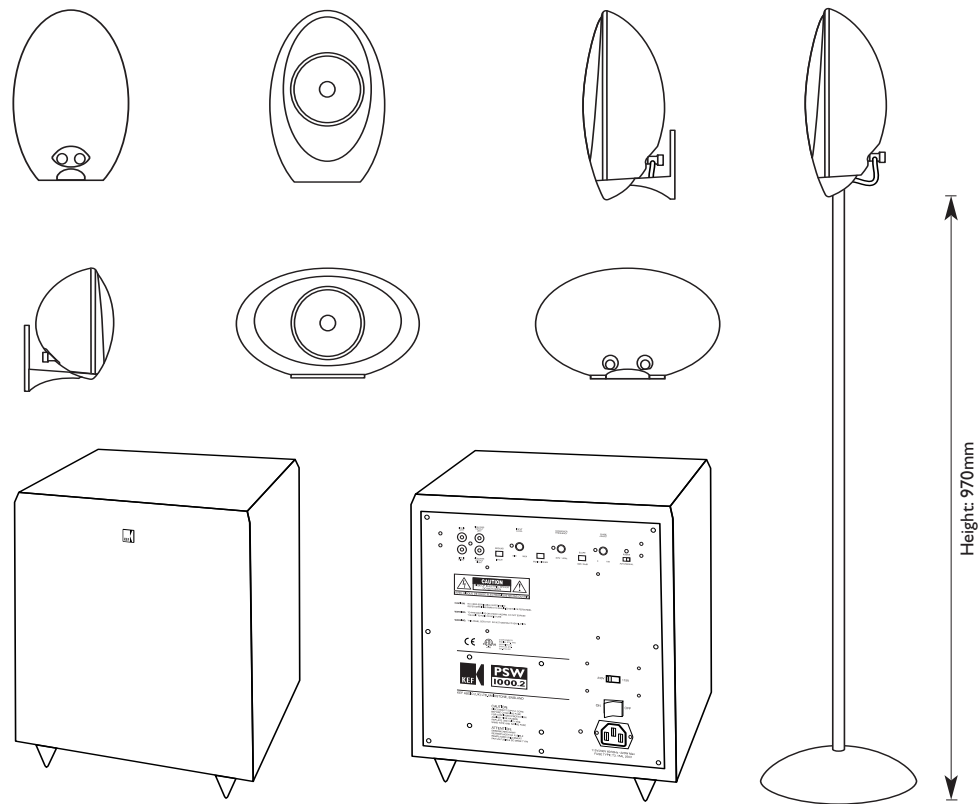
Behind them, large vertical flat panels act as high performance rear effect speakers, radiating the relevant parts of the signal to the back of the listening area.

And all the channels can be separately adjusted from your receiver to achieve a perfectly balanced sound.

"Surround yourself with sound,
not speakers"

5 Audio Channels from 2 Speakers

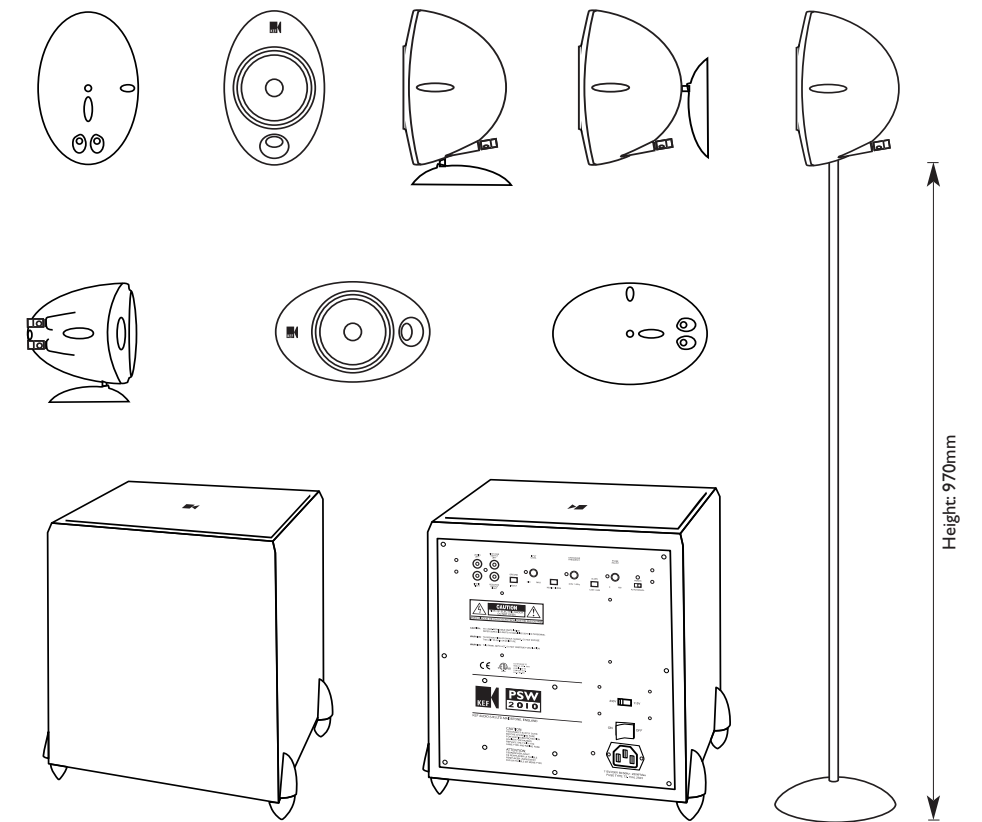




Specifications KHT1000 Series

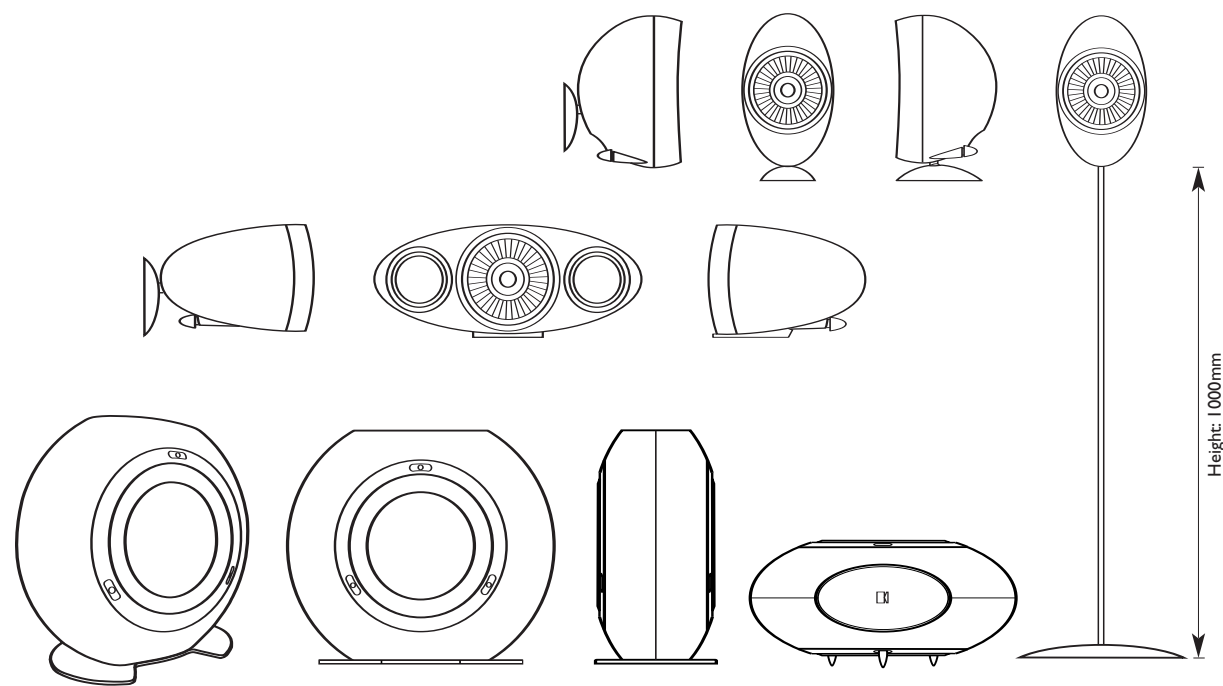
	HTS/HTC1001	PSW1000.2*
Design	Satellite / Centre	Powered Subwoofer
Drive units	Closed box 75mm (3in.) Uni-Q array with 15mm (0.6in.) HF	Bass reflex 200mm (8in.)
Frequency response (± 3 dB)	120Hz - 22kHz	38Hz - 180Hz
Crossover Frequency	3kHz	N/A
Power handling	100W	N/A
Amplifier	N/A	100W
Sensitivity (2.83V/1m)	86dB	N/A
Maximum output (SPL)	104dB	106dB
Impedance	8 Ω	N/A
Magnetic Shielding	Yes	Yes
Internal volume	0.5 litre	15.4 litres
Weight	1kg (2.2lbs)	13.5kg (29.7lbs)
Dimensions (H x W x D)	Satellite 165 x 110 x 78 mm / 6.5 x 4.4 x 3.1 in. Centre 107 x 181 x 78 mm / 4.2 x 7.1 x 3.1 in.	360 x 320 x 320 mm / 14.2 x 12.6 x 12.6 in.
Cabinet finishes	Matt Silver	Matt Silver
Optional Accessories	Floorstand for HTS1001 Wall Bracket for HTS3001	

* Note: Model PSW1150 supplied in North America is available in Matt Black



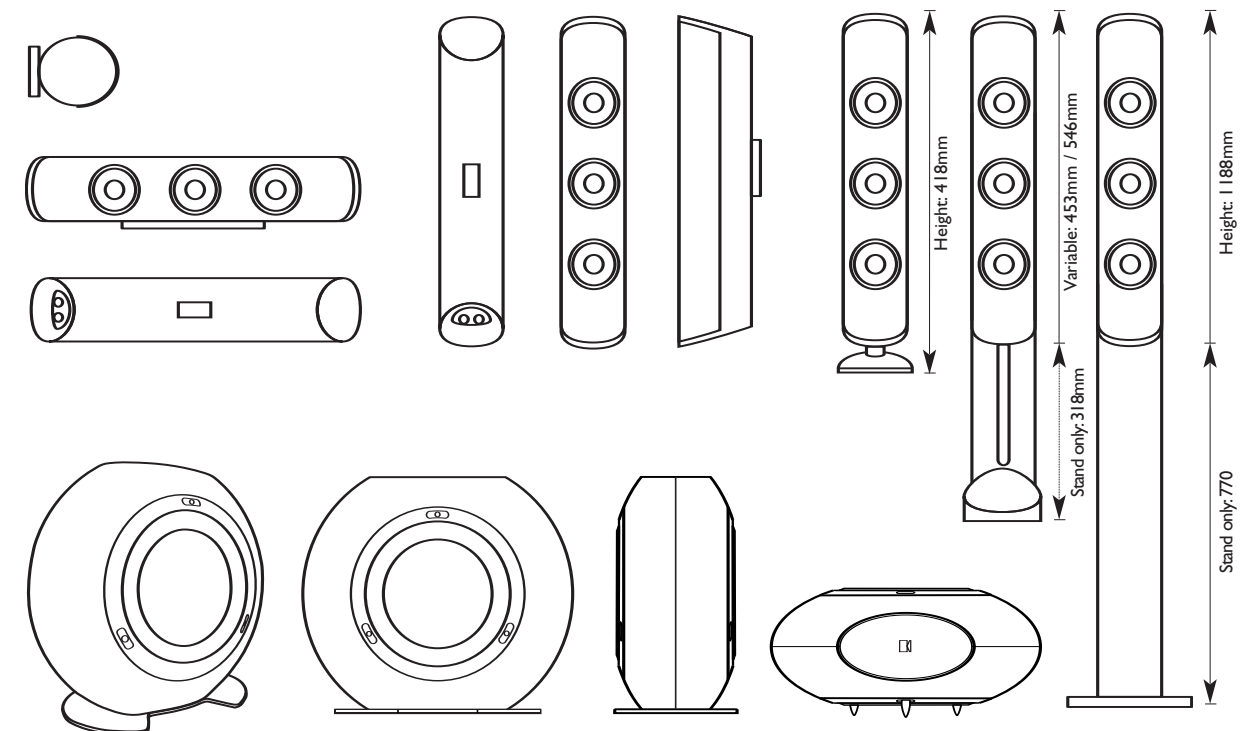
Specifications KHT2000 Series

	HTS/HTC2001.2	PSW2010
Design	Satellite / Centre	Powered Subwoofer
Drive units	Reflex ported 100mm (4in.) Uni-Q array with 19mm (3/4in.) HF	Closed box 250mm (10in.)
Frequency response (± 3 dB)	80Hz - 27kHz	30Hz - 140Hz
Crossover Frequency	2.8kHz	N/A
Power handling	100W	N/A
Amplifier	N/A	250W
Sensitivity (2.83V/1m)	88dB	N/A
Maximum output (SPL)	104dB	108dB
Impedance	8 Ω	N/A
Magnetic Shielding	Yes	Yes
Internal volume	1.5 litres	15.4 litres
Weight	2kg (4.4lbs)	14.5kg (31.9lbs)
Dimensions (H x W x D)	Satellite 198 x 130 x 150 mm / 7.8 x 5.1 x 5.9 in. Centre 107 x 181 x 78 mm / 4.2 x 7.1 x 3.1 in.	360 x 320 x 320 mm / 14.2 x 12.6 x 12.6 in.
Cabinet finishes	Matt Silver; Soft Black	Matt Silver; Black
Optional Accessories	Floorstand for HTS2001.2	



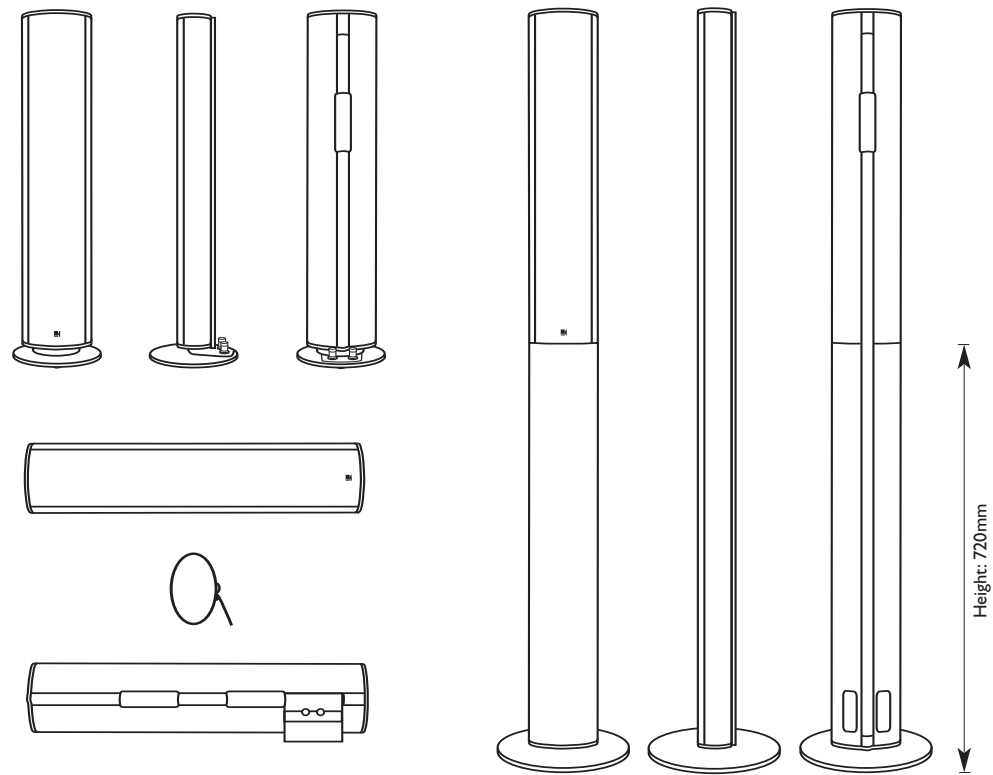
Specifications KHT3000 Series

	HTS3001 Satellite	HTC3001 Centre	HTB2 Subwoofer
Design	Bass reflex two-way	Closed box three-way	Powered Subwoofer with passive radiator
Drive units	115mm (4.5in.) Uni-Q array with 19mm (0.75in.) Aluminium HF	115mm (4.5in.) Uni-Q array with 19mm (0.75in.) Aluminium HF 2 x 75mm (3in.) LF	1 x 250mm (10in.) 1 x 250mm (10in.) ABR
Frequency response (± 3dB)	70Hz - 55kHz	65Hz - 55kHz	30Hz - 250Hz
Crossover frequency	2.2kHz	2.2kHz	N/A
Amplifier	100W	100W	250W built in class D amplifier
Sensitivity (2.83V/1m)	88dB	90dB	N/A
Maximum output (SPL)	108dB	110dB	110dB
Impedance	8Ω	8Ω	N/A
Magnetic Shielding	Yes	Yes	Yes
Internal volume	1.75 litres	2.4 litres	15 litres
Weight	2kg (4.5lbs)	2.6kg (5.8lbs)	11.3kg (24.9lbs)
Dimensions (H x W x D)	245 x 125 x 150 mm / (9.6 x 4.9 x 5.9 in.)	130 x 300 x 185 mm / (5.1 x 11.8 x 7.3 in.)	390 x 440 x 195 mm / (vertical) (15.4 x 17.3 x 7.7 in.) 227 x 440 x 385 mm / (horizontal) (8.9 x 17.3 x 15.2 in.)
Cabinet finishes	High Gloss Silver; High Gloss Black	High Gloss Silver; High Gloss Black	High Gloss Silver; High Gloss Black
Optional Accessories	Floorstand for HTS3001		



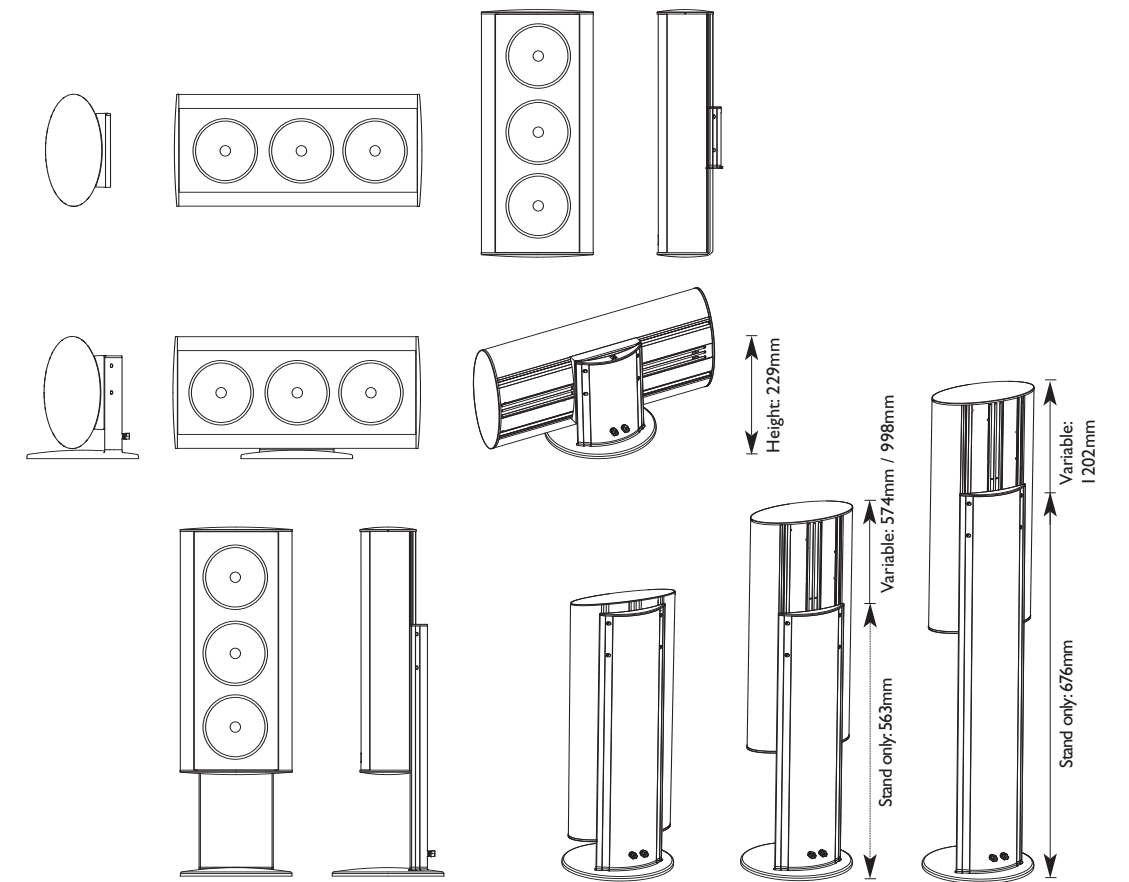
Specifications KHT5000 Series

		HTS/HTC5001.2	HTB2 Subwoofer
Design		Satellite / Centre	Powered Subwoofer with passive radiator
Drive units		75mm (3in.) Uni-Q array with 15mm (0.6in.) HF 2 x 75mm (3in.) LF	1 x 250mm (10in.) 1 x 250 mm (10 in.) ABR
Frequency response (± 3dB)		95Hz - 30kHz	30Hz - 250Hz
Crossover frequency		3kHz	N/A
Power Handling		100W	N/A
Amplifier		N/A	250W built in class D amplifier
Sensitivity (2.83V/1m)		87dB	N/A
Maximum output (SPL)		106dB	110dB
Impedance		8Ω	N/A
Magnetic Shielding		Yes	Yes
Internal volume		1.4 litres	15 litres
Weight		2kg (4.4lbs)	11.3kg (24.9lbs)
Dimensions (H x W x D)	Satellite	419 x 88 x 127 mm / (16.5 x 3.5 x 5.0 in.)	390 x 440 x 195 mm / (vertical) (15.4 x 17.3 x 7.7 in.)
	Centre	88 x 419 x 127 mm / (3.5 x 16.5 x 5.0 in.)	227 x 440 x 385 mm / (horizontal) (8.9 x 17.3 x 15.2 in.)
Cabinet finishes		Matt Silver; High Gloss Black	High Gloss Silver; High Gloss Black
Optional Accessories		Desk Stand (variable height) Floorstand	



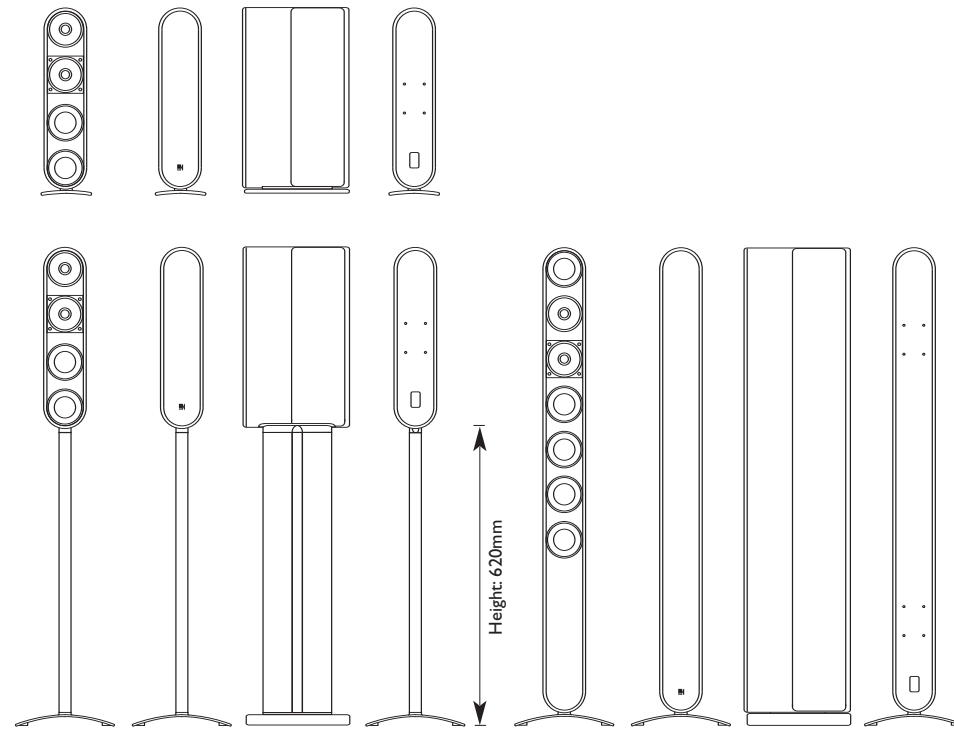
Specifications KHT6000 ACE

	HTS6001 Satellite	HTC6001 Centre Channel
Design	Three-way closed box, ACE enclosure	Three-way closed box, ACE enclosure
Drive units	75mm (3") Uni-Q array with 15mm (1/2") Aluminium dome HF; 4 x 75mm (3") LF	75mm (3") Uni-Q array with 15mm (1/2") Aluminium dome HF; 4 x 75mm (3") LF
Frequency response (±3dB)	90Hz - 30kHz 75Hz - 30kHz (with optional 'Bass Extender' bass enhancing stand)	90Hz - 30kHz
Crossover frequency	3kHz	3kHz
Power handling	100W	100W
Amplifier requirements	30 - 100W	30 - 100W
Sensitivity (2.83V/1m)	87dB	87dB
Maximum output (SPL)	109dB	109dB
Impedance	8Ω	8Ω
Magnetic shielding	Yes	Yes
Internal volume	2.9 litres	2.9 litres
Weight	3.9kg (8.6lbs)	3.9kg (8.6lbs)
Dimensions (H x W x D)	600 x 121 x 85 mm 23.6 x 4.8 x 3.4 in.	121 x 577 x 85 mm 4.8 x 22.7 x 3.4 in.
Cabinet Finishes	Matt Silver; High Gloss Black	Matt Silver; High Gloss Black
Optional Accessories	Floorstand with Bass Extender	



Specifications KHT9000 ACE

	HTS9001 Satellite	HTC9001 Centre Channel
Design	Three-way closed box, ACE enclosure	Three-way closed box, ACE enclosure
Drive units	165mm (6 1/2") Uni-Q array with 19mm Aluminium dome HF; 2 x 165mm (6 1/2") LF	165mm (6 1/2") Uni-Q array with 19mm Aluminium dome HF; 2 x 165mm (6 1/2") LF
Frequency response (±3dB)	75Hz - 27kHz	75Hz - 27kHz
Crossover frequency	3kHz	3kHz
Power handling	30 - 150W	30 - 150W
Amplifier requirements	100W	100W
Sensitivity (2.83V/1m)	87dB	87dB
Maximum output (SPL)	101dB	101dB
Impedance	8Ω	8Ω
Magnetic shielding	Yes	Yes
Internal volume	11.5 litres	11.5 litres
Weight	9.9kg (21.8lbs)	9.9kg (21.8lbs)
Dimensions (H x W x D)	555 x 250 x 125 mm 21.8 x 9.8 x 4.9 in.	250 x 555 x 125 mm 9.8 x 21.8 x 4.9 in.
Cabinet Finishes	Matt Silver; High Gloss Black	Matt Silver; High Gloss Black
Optional Accessories	Table-top stand for HTS9001 Floorstand for HTS9001	Centre Table-top stand for HTS9001 Centre Floorstand for HTS9001



Specifications

fivetwo series

	MODEL 7	MODEL 11
Design	Surround sound speaker	Surround sound speaker
Drive units	7 Speaker drivers, comprising: Dedicated Centre Channel 1 x 75mm (3in.) Uni-Q array with 1 x 15mm (0.6in.) HF Front Left/Right Channel 1 x 75mm (3in.) Uni-Q array with 1 x 15mm (0.6in.) HF 2 x 75mm (3in.) LF Rear Left/Right Channel 1 x Vertical Flat Panel	11 Speaker drivers, comprising: Dedicated Centre Channel 1 x 75mm (3in.) Uni-Q array with 1 x 15mm (0.6in.) HF 1 x 75mm (3in.) LF Front Left/Right Channel 1 x 75mm (3in.) Uni-Q array with 1 x 15mm (0.6in.) HF 4 x 75mm (3in.) LF Rear Left/Right Channel 1 x Vertical Flat Panel
Frequency response (± 3 dB)	100Hz - 30kHz	90Hz - 30kHz
Crossover frequency	3kHz	3kHz
Power handling	100W	100W
Sensitivity (2.83V/1m)	87dB	87dB
Maximum output (SPL)	104dB	109dB
Impedance	8 Ω	8 Ω
Internal volume	1.4 litres	15 litres
Weight	4.3kg (9.5lbs)	8kg (17.6lbs)
Dimensions (H x W x D)	400 x 104 x 230 mm / (15.7 x 4.1 x 9.1 in.)	1020 x 210 x 230 mm / (40.2 x 8.3 x 9.1 in.)
Cabinet finishes	Matt Silver; High Gloss Black	Gloss Silver; High Gloss Black
Connectors	Supplied with connection for any 5.1 home theatre receiver/amplifier (Cable for connection to KEF KIT100/200 available separately)	Supplied with connection for any 5.1 home theatre receiver/amplifier
Optional Accessories	Floorstand for Model 7 Wall Bracket for Model 7 or Model 11	

Glossary of Terms & Technologies

ABR	(Auxiliary bass radiator), enhances bass output.
ACE	(Acoustic Compliance Enhancement) Increases the effective volume of air inside the speaker enclosure
Audiophile	An expert hifi enthusiast.
Bass Extender	Ingenious KEF design utilising the space in the floorstand as extended loudspeaker cabinet space.
Crossover	A circuit used to separate frequencies to Woofers & Tweeters.
Decibel	The unit of measuring sound pressure level (SPL).
Distortion	Unwanted exaggerations of a signal.
Frequency Range	The usual band of frequencies a speaker can reproduce.
HF	High range Frequency.
Impedance	Opposition to alternating current by an electric circuit.
KHT	KEF Home Theatre.
LF	Low Frequency.
Long-throw driver	A bass cone with the ability to move more air.
Magnetically Shielded	Will not effect magnetically sensitive devices such as TV sets.
Maximum SPL	Maximum Sound Pressure Level - maximum output available from a speaker.
MF	Mid range Frequency.
Mid-range	A loudspeaker cone working in the mid frequency band.
Neodymium	A powerful rare earth magnet
NXT driver array	A "flat panel" technology developed by New Transducers Ltd.
Point Source	The ability of the KEF Uni-Q design to have both MF and LF emitted from the same exact point.
Power Handling	Long term test of continuous power.
Resonance	Unwanted noises at particular frequencies.
Selecta-Mount	Concealed wall mounting system allowing simple auto-setup and connection of speakers.
Sealed Suspension Technology	KEF technology which allows the Uni-Q driver to play louder and smoother.
Sensitivity	Measurement of a speaker's output with an input of 1 watt.
Smart Bass	New KEF Subwoofer design giving much simpler connection and set up of subwoofers.
Stereo Imaging	The holographic sound that can be produced by two speakers.
SPL Output	Sound Pressure Level measured in dB 'decibels'.
Subwoofer	A speaker designed to reproduce low frequencies (below 100Hz).
Three-way closed box	A simple, sealed speaker using a tweeter, mid-bass and bass woofers.
Timbre matched	The speakers are balanced with the same tonal characteristics.
Tweeter	A loudspeaker cone working in the high frequency band.
Two-way closed box	A simple, sealed speaker using a tweeter and mid-bass woofer.
Woofer	A loudspeaker cone working in the low frequency band.
Uni-Q	KEF's patented technology combining a woofer/mid and a tweeter.
Voice Coil	The moving motor attached to a cone or diaphragm.