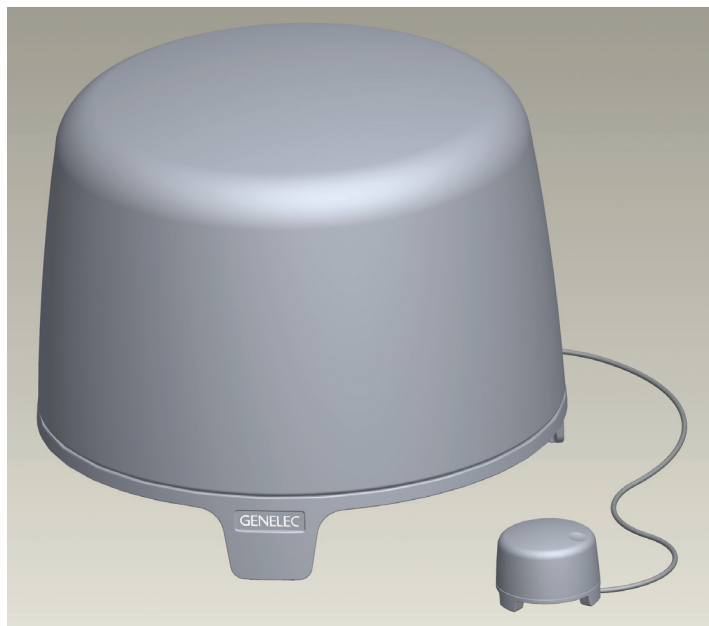


5040A

Preliminary Data Sheet

Genelec 5040A Active Subwoofer

GENELEC®



The Genelec 5040A is a very compact active subwoofer designed to complement up to five Genelec 6010A active loudspeakers or a pair of the slightly bigger 6020A's. The 5040A extends the system's bass response down to 35 Hz and integrates perfectly with the 6010A's in any environment. The playback level for the whole system is conveniently controlled by the remote volume control provided with the 5040A subwoofer.

The 5040A features a magnetically shielded downward firing 6 $\frac{1}{2}$ " bass driver attached to a die-cast aluminium base plate. The base plate also serves as the chassis for the 40 Watt amplifier and 5.1-channel

crossover filter circuitry. The 5040A packs a respectable punch of 96 dB maximum SPL.

The built-in crossover unit features six RCA input connectors for five main channels and LFE channel and five RCA output connectors for the 6010A loudspeakers. The main channels have a fixed high pass filter to work with Genelec 6010A loudspeakers. The LFE channel can reproduce signals up to 120 Hz. In addition to the RCA connectors, a 3.5 mm stereo jack input connector is provided for convenient connection to portable audio players or computers.

Adjustable input sensitivity in combi-

nation with adjustable crossover phase allows a seamless integration between the subwoofer and the main loudspeakers. Bass roll-off rate and input sensitivity can also be adjusted to suit different acoustical environments and subwoofer positioning.

Finding the correct place for the subwoofer is easy due to the compact size and versatile acoustical adjustments of the 5040A.

A combination of the 5040A and five 6010A's can create a dynamic and detailed soundstage like no other loudspeaker system of the same size category. Contact your local Genelec dealer for an audition.

5040A Preliminary Data Sheet

SYSTEM SPECIFICATIONS

	5040A
Free field frequency response (± 3 dB)	Main 35 Hz...85 Hz LFE 35 Hz...120 Hz
Maximum peak SPL output with random pink noise, measured in half space at 1 meter	96 dB
Self generated noise level in half space at 1 m on axis (A-weighted)	≤ 15 dB SPL
Driver, magnetically shielded	165 mm (6 $\frac{1}{2}$ ")
Weight	6.3 kg (13.9 lb)
Dimensions	
Height	251 mm (9 $\frac{7}{8}$ ")
Diameter	305 mm (12")

AMPLIFIER SECTION

	5040A
Amplifier short term output power (Long term output power is limited by driver unit protection circuitry)	40 W
Amplifier system THD at nominal output	≤ 0.05 %
Mains voltage	100, 120 or 230 V
Power consumption (average)	
Idle	7 VA
Full output	70 VA

CONNECTORS

	5040A
Main channels IN/OUT, LFE channel IN and LINK OUT unbalanced female RCA connectors pin ring	+ gnd
Stereo IN 3.5 mm Jack female connector Sleeve Tip Ring	gnd Left channel Right channel
Input impedance	10 kOhm balanced
Main channel OUT gain referred to IN	0 dB

CROSSOVER SECTION

	5040A
Subsonic filter (18 dB/octave) below	35 Hz
Crossover frequency, (sub/main channels)	85 Hz
LFE channel cutoff frequency	120 Hz
Midband rejection >400 Hz	≥ 50 dB
Sensitivity adjustment range	-9 dBu for 90 dB SPL
Bass Roll-Off control operating range in 2 dB steps	From 0 to -6 dB @ 35 Hz
Phase matching control in 90° steps	From 0 to -270° @ 85 Hz